

IN YOUR ROOM & ON CAMPUS

Save electricity

Electricity makes up 45% of all energy consumed by The New School, and 63% of carbon emissions. You can reduce emissions by:

- Turning off lights and electronic items when not in use
- Activating computer efficiency settings on your laptop
- Taking the stairs instead of the elevator if and when you are able

Find the right temperature

Try these tips to boost your heating and air-conditioning efficiency:

- Keep windows closed when the heat or air conditioner is on
- Throw on a sweater before turning up the heat
- Fans use 70 to 90% less electricity than air conditioning. Consider buying a fan for the times when a breeze is all you need.

Decrease waste: use your own...

- Coffee mug and pay just 99¢ at New School cafes.
- Water bottle and fill up for free at water bottle stations around campus.
- Shopping bag and say no to a paper or plastic bag that you don't need.

Print mindfully

The university only uses 100% recycled copy paper. Use less paper with double-sided printing and copying. Read what you can on a computer, tablet, or phone.

RESOURCES & INFORMATION

Tishman Environment and Design Center

The Tishman Environment and Design Center integrates bold design, policy and social justice approaches to tackle the climate crisis and advance environmental justice.

tishmancenter.org | [@NewSchoolTEDC](https://twitter.com/NewSchoolTEDC)

New School Buildings

Buildings' sustainability efforts are dedicated to reducing energy use and the resulting greenhouse gas emissions in order to slow climate change.

newschool.edu/buildings

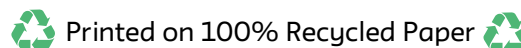
For more information

- Check out real time data on the Buildings Sustainability Dashboard: bit.ly/sustydash
- Take the New School Sustainability Pledge for more ideas on actions you can take: bit.ly/sustypledge
- Read The New School's Climate Action Plan: bit.ly/TNS_CAP

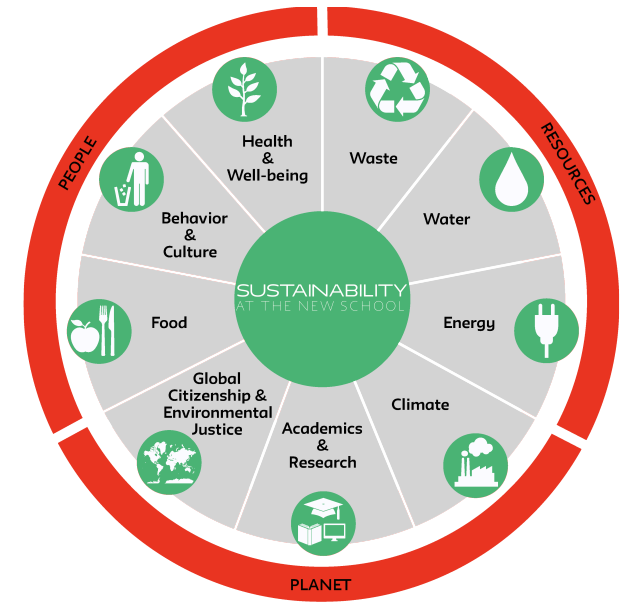
Keep in touch

- **Mike Harrington**, Assistant Director, Tishman Environment and Design Center: mikeharrington@newschool.edu
- **Erik Eibert**, Assistant Director for Sustainable Initiatives, Buildings: eiberte@newschool.edu

SUSTAINABILITY
AT THE NEW SCHOOL



SUSTAINABLE LIVING AT THE NEW SCHOOL



SUS·TAIN·A·BIL·IT·Y

Environmental, economic, and social justice that abides by the definition of "sustainable development" formed by the Brundtland Commission, established by the United Nations in 1983:

Meeting the needs of the present without compromising the ability of future generations to meet their own needs.

KITCHEN, BATHROOM & LAUNDRY

Eat sustainably on campus

New School Dining's mission is to provide just, good, real food that balances culinary creativity, complexity and diversity with stewardship, conservation, community and conscious purchasing.

Shop and eat local food

New Schoolers have numerous options for buying local, sustainable foods. Two of our favorites:

- **The Union Square Green Market** is open Monday, Wednesday, Friday, and Saturday.
- **The Corbin Hill Farm Share**, founded by a New School faculty member, brings produce grown in New York State (much of it organic) to you. Buy a share and pick up a bundle of fruits and veggies each week right on campus.

Conserve water

Most of the water consumed at The New School flows through restroom fixtures like faucets, showers, and toilettes. Conserve water by:

- Spending less time in the shower.
- Shutting off the faucet while you brush your teeth or scrub dishes.
- Filling out a work order to have leaky faucets and running toilettes fixed.

Do laundry with care

Try to avoid doing laundry unless you have a full load. Approximately 90% of the energy used to wash clothes is for heating the water, so select the cold wash cycle.

WASTE MANAGEMENT & CLEANING

Separate and sort your waste

The New School sorts waste according to New York City's recycling rules.

- Recycling is collected in all New School buildings.
- Everywhere food is sold on campus (aside from vending machines), compostable waste is collected.
- Compost bins are also available to residents in Kerrey Hall and 20th Street Residence Hall, and by request.
- Students living in other halls or off campus can also bring compost scraps to the Union Square Green Market.



Buy sustainable cleaning products

Read labels and avoid products with chlorine bleach, ammonia, aerosols, nonylphenol ethoxylates, phosphates, or petroleum based ingredients.

TRANSPORTATION & MOVE OUT

Reduce your transportation emissions

If you think twice about hailing a cab or requesting an uber, you will help to reduce The New School's indirect carbon emissions.

- The average subway trip generates 0.15 lbs of greenhouse gasses, compared to 0.91 lbs for a single occupancy vehicle.
- The longest walk from any New School building to a Citibike dock is just 2 minutes.
- If you have your own bike, you can keep it safe in the bike storage room on the L2 level of the University Center.
- Need a bike map? Drop by the Tishman Center office on the 16th floor of 79 5th Avenue to pick one up.

Before you go...

With finals, packing, and vacation plans ahead of you, the end of the year can get hectic. Keep your move out sustainable by:

- Disposing of e-waste (cords, small electronics, etc.) in the designated containers in your residence hall.
- Keeping your gently used school and art supplies out of landfills by donating them to the Good As New collection bins so that incoming students can use them next year.
- Donating unopened, nonperishable food items to the New School Food Pantry.
- Donating clothing and housewares to the Goodwill in the big blue bins provided.