

# The Gulf Coast Fund Timeline

**August 23-30, 2005**

## **Hurricane Katrina**

One of the most intense, largest, costliest, and deadliest hurricanes to hit the United States. Hurricane Katrina strengthened to a category 5 on August 28 and attained its peak intensity south of the Mississippi River. It made landfall as a high-level category 3 on August 29 near Buras, La., at the mouth of the river. Its final landfall was at the mouth of the Pearl River at the Louisiana and Mississippi border on August 29.





**September 18–26, 2005**

## **Hurricane Rita**

Slammed into the Gulf Coast just about 3 weeks after Hurricane Katrina had hit. By September 20 it was a hurricane off the coast of Key West, Fla. Gaining strength, Rita proceeded westward into the southeastern Gulf of Mexico as a category 3 on September 21 and eventually a category 5, reaching its peak intensity southeast of the mouth of the Mississippi River. Rita weakened to a category 4 on September 22 and a category 3 on September 24, when it made landfall in southwestern Louisiana, just west of Johnson's Bayou and east of Sabine Pass at the Texas-Louisiana border.

# The Origins of the Gulf Coast Fund

**January 11-15, 2006**

**The Fund was created during an emergency conference call convened by HEFN to discuss the philanthropic response. During this call the need for independent sampling and testing for environmental contamination was discussed and funding was raised to hire chemist and MacArthur “genius” award recipient Wilma Subra, to conduct testing all along the affected Gulf Coast region . At the same time, funders understood that while immediate direct relief was necessary, philanthropy’s appropriate response would be to provide long-term, sustainable support for rebuilding.**



# February-March 2006

## Advisory Group Established to Direct the Fund

An advisory group of two dozen local/regional gulf coast advocates, non-profit and community based leaders is convened. Responsibilities include:

- Advise on Fund strategies, policies & grantmaking priorities
  - Represent the Fund to constituents and funders
  - Identify important on-the-ground projects and initiatives to support and distribute RFPs
- Serve on grantmaking panels

**March 18, 2006**

## **Founding of the Gulf Coast Fund for Ecological Renewal**

The Gulf Coast Fund was founded after Hurricanes Katrina and Rita by funders active in the Health and Environmental Funders Network (HEFN) and the Environmental Grantmakers Association (EGA). The Fund is a collaborative pooled fund where those at the epicenter of the disasters have been effectively organized to inform and direct the use of philanthropic resources. The Fund is dedicated to empowering historically disenfranchised communities, approaching recovery in a holistic manner and remaining focused on a multiplicity of issues and constituencies across the entire affected region.

- Fund launches with \$10,000 grants to each of the Advisory Group member organizations  
Advisory Group's first meeting will be at the Ashé Cultural Center in the Tremé neighborhood
- MaryKay Penn will facilitate
- Co-Founders of the Fund: Marni Rosen (Jenifer Altman Foundation), Michelle DePass (Ford Foundation), Annie Ducmanis (Environmental Grantmakers Association)

**March 2006**

**Tour of the Lower 9th Ward  
& the first Gulf Coast Fund Advisors meeting**













**WE HAVE  
THE RIGHT  
TO RETURN!**

Hold the Corps  
Accountable!  
Levees  
.org

[www.levees.org](http://www.levees.org) for Facts and Info





COMMON GROUND  
**TOOL  
LENDING**  
♦ BOOTS ♦ SUITS  
♦ GLOVES ♦ TOOLS  
♦ BROOMS ♦ MOPS  
♦ RESPIRATORS

504-312-1731



**DONATIONS  
ACCEPTED**

SAFETY  
AND  
QUALITY

**SIGN UP FOR  
DEBRIS  
REMOVAL -  
HOUSE  
GUTTING**

COMMON G  
Tool Lend







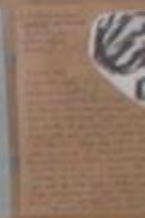
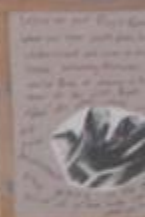


Sept. 2, 2005 9:13 a.m.

WE ARE Sorry for the school, but the shelter ~~DIOP~~  
was a blessing. we had to bring over 200 people here  
with no help from Any Coast Guard Boats, people  
died and are still in there house, we had to leave &  
we asked the C.G. for help and got NONE. Thanks to  
micky, McKinley, ERIC PHIL Tyrone, Karl B., CORY, +  
Richard, Cedric, Jeff D. Jeff, Ben, Big Greg, Rick,  
10<sup>th</sup> and AL, Lance, + <sup>Bessie</sup> ANTHONY we saved the whole project  
THEY LEFT US Here to Die God Sons ✓



POST KATRINA  
PORTRAIT  
MISSION STATEMENT →



Put finish  
Written on  
Respite



VA  
→  
MENT

WOMEN IN STATEMENT  
AND DISCUSSION FOR  
THE PORTRAITURE  
EXHIBITION



Put finished  
(written on)  
Portraits in here  
POST-Karim  
Portrait  
drop-off









# Tour of Turkey Creek and Gulfport, MS led by Derrick Evans and Rose Johnson & 2nd meeting of the GCF Advisors

## Turkey Creek Sept, 2006



























### Advisory Committee Gaps

Alabama members  
Louisiana (no state) members  
Texas members  
Indigenous people/members  
Guinean  
Asian/Latino members  
White members

### Nominating Committee

Elodia  
Brenda  
Steve  
Derek Evans  
Regina

1. Guinean  
2. Asian State





### Advisory Committee Cops

Alabama members  
Lawson (for info) members  
Teresa's members  
Indigenous people/members  
Cecilia  
Asian/Latino members  
White members

### Nominations Committee

Elodia  
Brenda  
Alex  
Alex Evans  
na

(Cecilia)  
Alex Evans







# EJ solidarity tour put on by many GCF partners and grantees









**ENVIRONMENTAL  
JUSTICE  
FOR ALL**

SEPTEMBER 24 - OCTOBER 1

[www.EJAll.org](http://www.EJAll.org)





















2428



WHICH YOU WILL NOT  
AND MOBILIZE TO STOP.  
YOU WILL LEARN -  
FORCED - TO ACCEPT...  
TURE IS UNWRITTEN  
NE WE GET IS UP TO US."









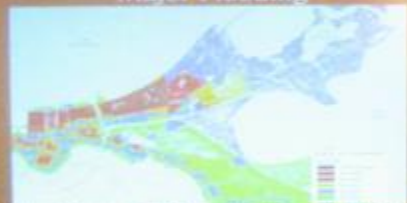




# April 2007: Gulf Coast Fund Convening, Climate Action, Advisors Meeting, & Funder Tour



### Major Flooding



- 108,733 households had over 4 feet of flood water;
- 50% of all New Orleans households.































Future Fencing Friends  
WHO SHOULD JOIN US???

WHO SHOULD JOIN US???

| COMMUNITY | CONTACT | PHONE | EMAIL |
|-----------|---------|-------|-------|
|-----------|---------|-------|-------|

# WHAT RESOURCES CAN WE SHARE?

**SHARK!**

| Resource / Resource Contact Person  | Resource Phone / Email          | Suggested By and Contact Info       |
|---|---------------------------------|-------------------------------------|
| Black Women's Leadership Initiative<br>1000 17th St NW<br>Washington, DC 20036<br>Phone: (202) 462-1000<br>Email: info@bwli.org | (202) 462-1000<br>info@bwli.org | Dr. J. J. Jones<br>j.jones@bwli.org |
| Black Women's Initiative<br>1000 17th St NW<br>Washington, DC 20036<br>Phone: (202) 462-1000<br>Email: info@bwli.org            | (202) 462-1000<br>info@bwli.org | Dr. J. J. Jones<br>j.jones@bwli.org |
| Black Women's Initiative<br>1000 17th St NW<br>Washington, DC 20036<br>Phone: (202) 462-1000<br>Email: info@bwli.org            | (202) 462-1000<br>info@bwli.org | Dr. J. J. Jones<br>j.jones@bwli.org |











Gulf  
Coast  
Fund

ROCKEFELLER  
Philanthropy  
Advisors



LOEWS  
NEW ORLEANS HOTEL  
LOUISIANA







GLORIA'S  
HOME OF THE  
ONE DOLLAR  
BREAKFAST

GERT TOWN  
REVIVAL  
INITIATIVE  
"AT HOME"

GERT TOWN  
GREAT

Broadway











**PEC** PEOPLE'S  
ENVIRONMENT  
CENTER


SCIENCE DIRECTLY SERVING PEOPLE





**Welcome Home**  
**Holy Cross neighbors**  
We are back and rebuilding  
Our community  
Holy Cross Neighborhood Association

**Welcome Back**  
Holy Cross Neighborhood Association  
Meets every Thursday  
at 5 pm  
Holy Cross School Cafeteria  
(white trailer near River)

 **HCNA/CSED**  
**Lower Ninth Ward Center for  
Sustainable Engagement & Development**  
A Project of  
Holy Cross Neighborhood Association  
5130 Chartres Street • P.O. Box 3417  
New Orleans, LA 70177 • [sustainthe9@gmail.com](mailto:sustainthe9@gmail.com)  
**504-324-9955**  
*Sustain the Nine*



NDERS



MULTIPLE FAILURES













MIRA!  
NO SOMOS CRIMINALES  
WE ARE NOT CRIMINALS

YOUTH







¿DÓNDE ESTABLECE LA LEY?

No Hay Dinero en la Oficina de Donaciones de Bases a Diablos

To do nothing is not to have to do anything, you just need to see the wrong

MIRA  
DONACION















**SAVE THE SEED**

**REACHING YOUTH LEFT BEHIND**

**228-374-3010**



**ENVIRONMENTAL INJUSTICE**

**DANGER**  **PELIGRO**







## New home cause for celebration

Land Trust will aid N. Gulfport

By MICHAEL A. RYAN  
mryan@herald.com

**GULFPORT** — One of the most important reasons Gulfport has been able to build a new home for the community where the children were "born and bred" is because of the efforts of the North Gulfport Land Trust.

In 1994, the trust was established to help the community where the children were "born and bred" by providing a place for the children to live and grow.

The trust was established to help the community where the children were "born and bred" by providing a place for the children to live and grow.

# SunHerald

SOUTH MISSISSIPPI'S NEWSPAPER

800 VOL 224 NO 382

THURSDAY, MARCH 18, 2004

www.sunherald.com

## LOCAL



### Moving day

North Gulfport Community Land Trust moves two cottages to help get people into affordable housing. **A-2**



The North Gulfport Community Land Trust moved a house, built around 1910, from Pine Road to Mandeville on Wednesday morning to a location near Martin Luther King Blvd. in North Gulfport.

## A moving experience

### Donated homes get new sites

By TAMMIE SMITH  
tsmith@herald.com

**GULFPORT** — There are two new residents of North Gulfport, and they arrived from their former homes in a fun and friendly way.

The two cottages — one yellow and one blue — were moved from the old site to the new site by a crane.

The trust was established to help the community where the children were "born and bred" by providing a place for the children to live and grow.

The trust was established to help the community where the children were "born and bred" by providing a place for the children to live and grow.

The trust was established to help the community where the children were "born and bred" by providing a place for the children to live and grow.

The trust was established to help the community where the children were "born and bred" by providing a place for the children to live and grow.



The house was part of an effort to provide affordable housing and provide affordable housing.

### Details

The trust was established to help the community where the children were "born and bred" by providing a place for the children to live and grow.

The trust was established to help the community where the children were "born and bred" by providing a place for the children to live and grow.



THE UNIVERSITY OF CHICAGO  
 LIBRARY  
 540 EAST 57TH STREET  
 CHICAGO, ILL. 60637  
 (312) 937-1234





















































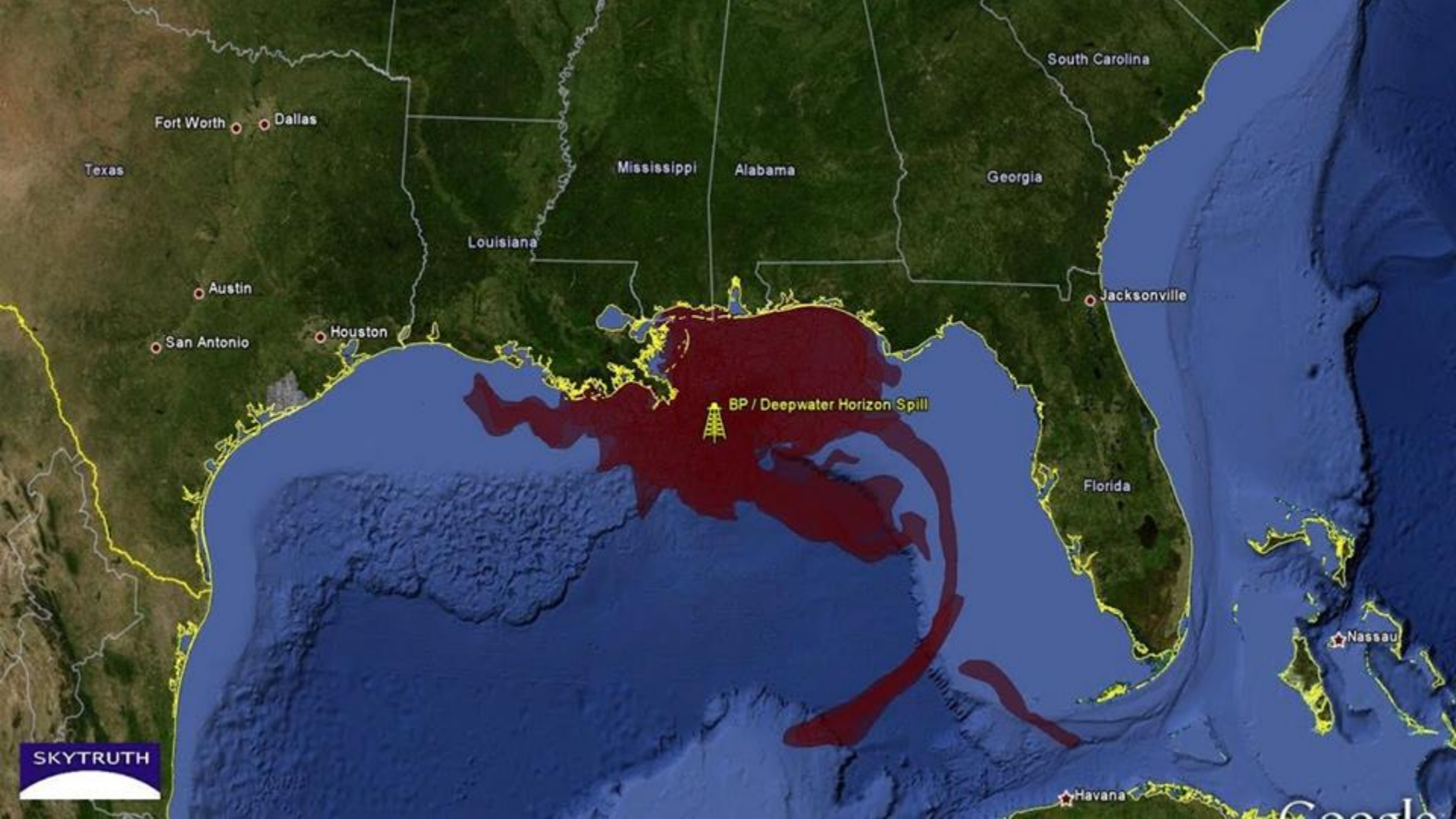




# April 2010 Deepwater Horizon Explosion







Fort Worth Dallas

Texas

Mississippi

Alabama

Georgia

South Carolina

Louisiana

Austin

San Antonio

Houston

Jacksonville

Florida

Nassau

Havana

BP / Deepwater Horizon Spill

SKYTRUTH

Google





# June 2010, Pointe a la Hache, LA



**"BP violated our home. Our way of life. They are responsible. BP shouldn't be telling us what they're going to pay us. We should be telling BP, this is what we want from you: give 6 months pay, then we'll come back and talk at the end of 6 months. Why are we constantly letting BP inject programs on us to satisfy BP?"**

**--Byron Encalade, President of the Louisiana Oystermen's Association**



















# June 2010 Jean Lafitte Town Hall/BP Claims Office







# June 2010 Kenneth Ford Teaches Labb Volunteers to use air sampling buckets







# July 2010 Meeting with EPA Assistant Administrator

*Center for Environmental & Economic Justice*



*Center for Environmental & Economic Justice*











# August 2010 Oil Plume Testing off Pass Christian







A close-up photograph of two white flip phones held side-by-side by a person's fingers. Both phones have a silver-colored camera lens and a small speaker grille. The phone on the left has a teal sticker with white text that reads "BRIDGE THE GULF" and "Flip #". The phone on the right is plain white.

**BRIDGE THE GULF**  
**Flip #**

flip





LP  
HU

A/C  
AUTO  
EBL

0.0R + 225.0R 10.017NM

1R2

MODE

ES (PUSH)

— RANGE +

BRILL

RINGS

ECHO  
TRAIL

ZOOM

EBL  
OFFSET

OFF  
CENTER

GUARD  
ALARM

MENU

EBL/VRM CONTROLS

CTRL

SELECT

*Rural Development*



*Leadership Network*





# October 2010 BP Costume Contest





# November 2010 Robin Mann, President of the Sierra Club, visits the Mississippi Gulf Coast





















# November 2010 Rally for the Truth







THE TRUTH!  
WE CAN  
HANDLE IT

Mr. President,

here: Grand  
Isle

KAREN  
HOPKINS

GRAND ISLE, LA.



THANK YOU  
HURRICANE VOLUNTEERS  
AND  
COMMUNITY NONPROFITS  
YOU ALONE HAVE MADE  
A DIFFERENCE









Pay

THE DIRTY LIES  
CLEAN COAL IS A DIRTY LIE

WE FISH  
WE VOTE

DON'T BE A  
COAL LIE

# December 2010 Coastal Response Center Coden Solar Event







# February 2011 Gulf Coast Ecosystem Restoration Task Force







**GULF COAST  
ECOSYSTEM  
RESTORATION  
TASK FORCE**

# February 2011 Housing and Environmental Justice Conference







# April 2011 Power Shift





Deadbeat Dozen **TAX BILL**  
APRIL 18, 2011

**BP**

THEIR SHARE OF THE COST OF THE GULF COAST  
**\$9,900,000,000.00\***

**The American Taxpayers**

\* BP said Tuesday that it plans to pay \$10 billion, or about half the amount promised to oil victims of the disaster, by deducting costs related to the oil spill.

**PAY**

MAKES POLLUTERS  
**PAY**  
the EPA











DIRTY  
ENERGY  
DARK  
FUTURE

Petrol  
DEATH  
TOLL!!

PETROL DEATH  
TOLL

SUN not OIL  
SAVE the GULF

WE'RE STILL  
HERE

HIDE YO KIDS  
HIDE YO WIFE  
cause they  
FRACKING!  
errybody

OIL + WATER  
DON'T MIX!  
COREXIT IS NOT A  
FIX!

COAL  
IS OVER

UNITE



Help  
me.







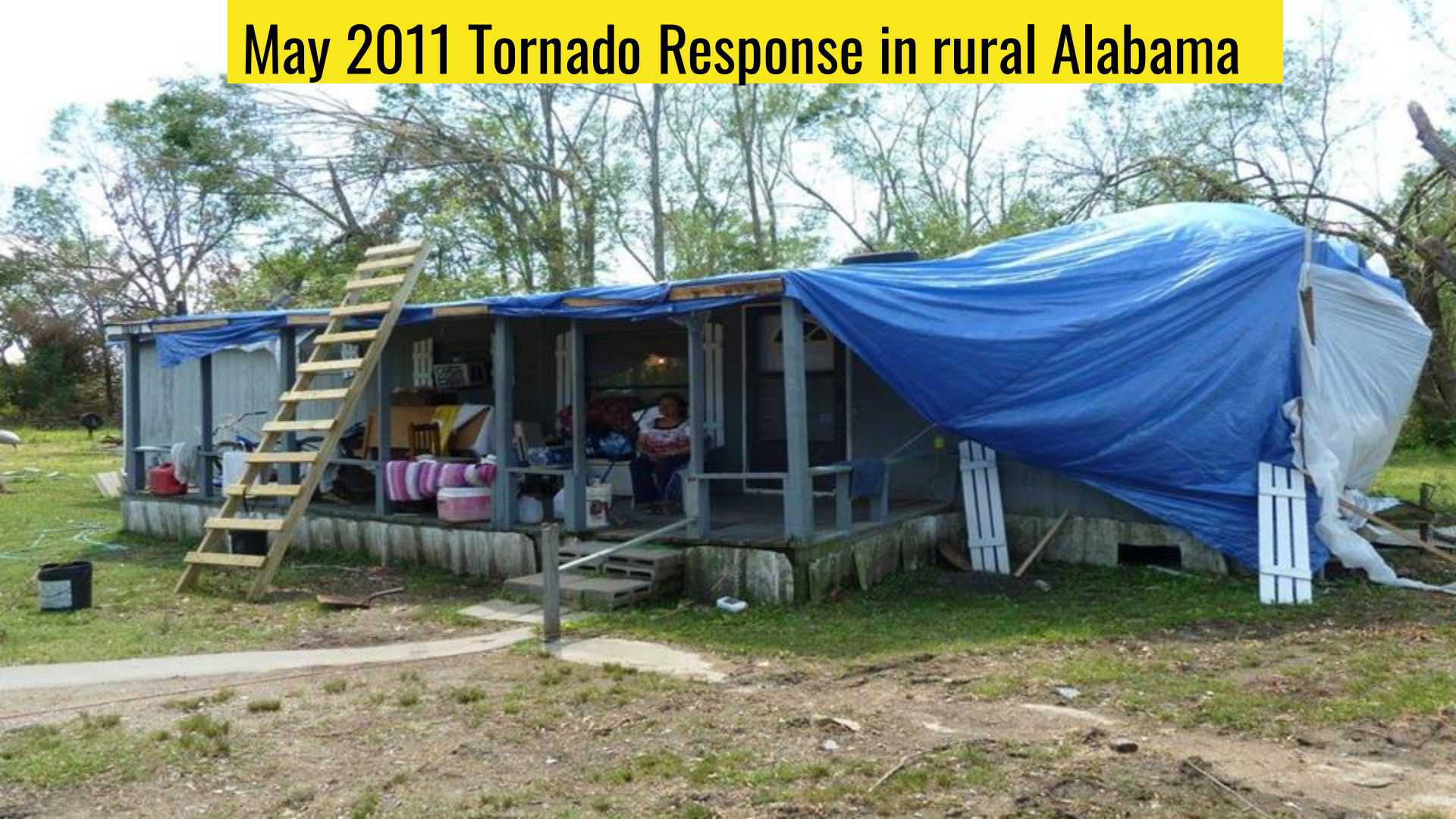


KATRINA:OMG!  
BP:WTF?!!

BP's OIL IS  
STILL HERE  
...AND SO ARE  
WE!



# May 2011 Tornado Response in rural Alabama























# January 2012 Fit for a King Celebration







# March 2012 Regional Justice Leadership Summit





# Community Health Workers Training

- Gulf Coast Detox Center (Dr. Robichaux)

- WHAT IS THE GOAL OF TRAINING  
↳ Community outreach?

- What is the difference b/w the people  
They are coming to these trainings v/  
the IP (CR)?



2012 May Day









SHERIFF STOP  
CRIMINILIZING  
AND TERRORIZING  
OUR COMMUNITIES

WOMEN UN







DOCUMENTED  
AND  
UNAFRAID  
TENEMOS  
MIEDO

PEDIMOS  
JUSTICIA

THEFT  
IS OUR  
INJURY

PAZ  
JUSTICIA

JOBS  
WITH  
JUSTICE

We are  
ALL  
Americans

RESPECT  
WORKERS





Clean Water Act Penalties

20% to Oil Spill  
Liability Trust Fund

80% to the Gulf Coast Restoration Trust Fund

**Direct  
Component**

35% equally  
divided among  
the five Gulf  
Coast States for  
ecosystem  
restoration,  
economic  
development,  
and tourism  
promotion

**Council-selected  
Restoration  
Component**

30% + interest  
managed by the  
Gulf Coast  
Ecosystem  
Restoration  
Council for  
ecosystem  
restoration  
under the  
Comprehensive  
Plan

**Spill Impact  
Component**

30% divided  
among the five  
Gulf Coast States  
according to a  
formula to  
implement State  
Expenditure  
Plans, which  
require approval  
by the Council

**Gulf Coast  
Ecosystem  
Restoration  
Science Program**

2.5% + interest  
provided to  
NOAA for a  
monitoring,  
observations,  
science and  
technology  
program

**Centers of  
Excellence  
Research Grants  
Program**

2.5% + interest  
allocated to the  
Gulf Coast States  
for Centers of  
Excellence

# February 2013 Forward on Climate Rally

A large crowd of people is gathered outdoors for a climate rally. In the foreground, a man in a brown coat and black hat is looking towards the camera, while a woman next to him takes a photo with a camera. The crowd is diverse in age and appearance, with many wearing winter clothing like hats and coats. Several signs and banners are visible, including one that says "FORWARD ON CLIMATE" with a circular logo, another that says "WE CAN SAVE THE PLANET", and a large banner on the right that says "WE CAN SAVE THE PLANET". The background shows bare trees and a cloudy sky, suggesting a cold day.



**March 2013 EPA EJ Summit, Biloxi, MS**













# June 2013 The Gulf Guardian Awards



# 2013 Come Hell or Highwater: The Battle for Turkey Creek







NEW ORLEANS  
FILM FESTIVAL



# 2014 Climate Rally







earth  
justice

WINDSOR PHARMACY

Gulf  
Coast  
Fund

For Community Renewal  
and Ecological Health

CLIMATE  
ACTION  
NOW!

11th MARCH

SAVE  
YOUR  
SOUL

CLIMATE  
ACTION  
NOW!

DEFEND  
GULF  
COAST

GREEN

MARCHING FOR  
SPEL

YO  
GRAM  
BAR

Climate  
Change  
Challenge







# HISTORICALLY BLACK COLLEGES AND UNIVERSITIES Climate Change Initiative

Building Partnerships to Train the Next Generation of Leaders

FLORIDA A&M UNIVERSITY • GRAMBLING STATE UNIVERSITY • HOWARD UNIVERSITY • SOUTHERN UNIVERSITY •  
MAN COLLEGE • TENNESSEE STATE UNIVERSITY • TEXAS SOUTHERN UNIVERSITY • XAVIER UNIVERSITY





HISTORICALLY BLACK COLLEGES AND UNIVERSITIES  
**Climate Change Initiative**  
Partnerships to Train the Next Generation of Leaders

Partnerships to Train the Next Generation of Leaders  
... UNIVERSITY • GRANTING STATE UNIVERSITY • SOUTHERN UNIVERSITY  
... UNIVERSITY • TEXAS SOUTHERN UNIVERSITY • XAVIER UNIVERSITY

CLIMATE JUSTICE  
VS WALL  
ST. Politics

ear just

I'M MARCHING FOR...  
... CHANGING  
... ACTION

I'M MARCHING FOR...  
... CHANGING  
... ACTION

la prairie spa

la prairie spa